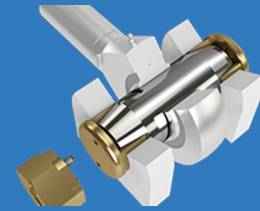


INSTALLATION INSTRUCTIONS

Straight Pin with Mounting Tool

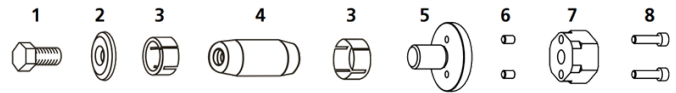
5.0

ENGLISH (ENGLISH)



Following these instructions will ensure that the Expander System is installed correctly and the pivot life is prolonged.

Congratulations! You have purchased a custom engineered solution to the pivot wear problem on your machine. Contact your dealer or Expander before proceeding if you have any questions.

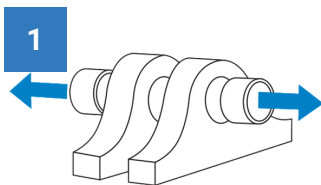


Expander System pivot pin comes with a warranty against lug wear of 10 years / 10 000 hours in operation (whichever comes first) from the date of purchase.

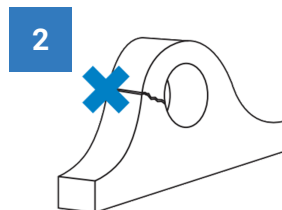
The picture shows a female axle but the principle is the same for other designs.

1 Bolt. 2 Washer. 3 Sleeve. 4 Axle (Pin). 5 Bolt for mounting tool. 6 Stop screws. 7 Mounting tool 8 Allen key screws.

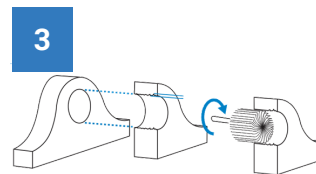
PREPARATION



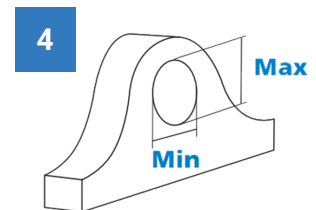
Remove any bushings to eliminate future wear between the bushing and the mounting lug.



Repair any structural damage i.e. cracks or bent lug ears before installation.



Smooth out irregularities in the bore surfaces.

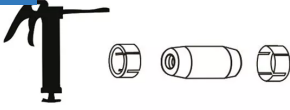


The difference between min and max diameter in the worn lugs must be within .06" (1.5 mm) for the sleeves to fit correctly.

ATTENTION! If the worn lugs diameter at any point is 2 mm (.080") or more over original lug diameter contact your dealer or Expander System. You will need oversized sleeves.

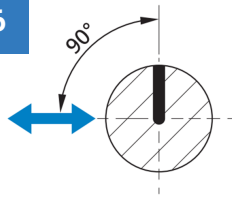
INSTALLATION

5

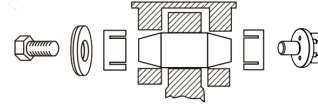


Grease the sleeves and axle with grease available, preferably graphite grease. Do not grease the threads!

6

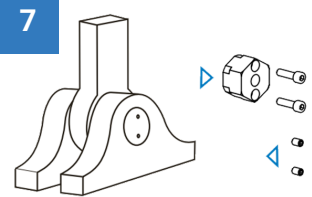


NOTE! If applicable: position greasing outlet 90 degrees to force direction to minimize stress concentration at outlet.



Assemble the *mounting tool* and *bolt for mounting tool* using the allen key screws. Insert the axle and position it in the bores. Install the sleeves, then the washers and fasteners. Tighten the fasteners with recommended torque.

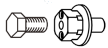
7



Remove the allen key screws and mounting tool. Mount the stop screws.

TORQUE RECOMMENDATIONS

8



Hex Bolts and Bolts for Mounting Tool

Torques M12-M24 $\pm 10\%$, M30... +30/-0%

	M12	M14	M16	M20	M24	M30	M36	M42
Nm	70	115	175	350	500	600	700	900
lb-ft	52	85	129	258	369	443	516	664



Hex Nuts: Standard Height

Torques M12-M24 $\pm 10\%$, M30... +30/-0%

	M12	M14	M16	M20	M24	M30	M36	M42
Nm	65	115	175	250	350	500	600	700
lb-ft	48	85	129	184	258	369	443	516



Hex Nuts: Low Height

All Torques $\pm 10\%$

	M12	-	M16	M20	M24	M30	-	-
Nm	60	-	125	200	275	350	-	-
lb-ft	44	-	92	148	203	258	-	-



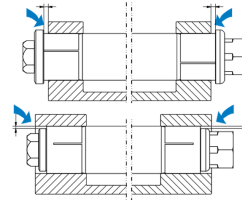
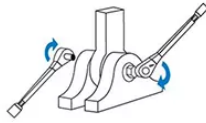
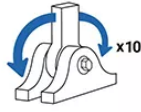
Spanner Nuts

All Torques $\pm 10\%$

	M17	M25	M35	M45	M55	M65	M75	M85
Nm	50	120	250	500	600	700	800	900
lb-ft	37	89	184	369	443	516	590	664

FINAL CHECK

9

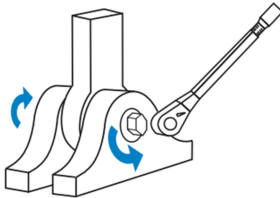


Grease the pivot (if applicable). After initial torque, move the machine through full range of motion several times and recheck torque. Check the torque after 10 hours, 40 hours and at regular service intervals to ensure proper seating of the sleeves.

Ensure that there is a minimum distance of 0,5mm (0.02") between the washer and the lug. Ensure that there is a minimum distance of 0,5mm (0.02") between the bolt for the mounting tool and the lug. **ATTENTION!** If the washer or bolt for the mounting tool is in contact with the lug, contact your dealer or Expander System.

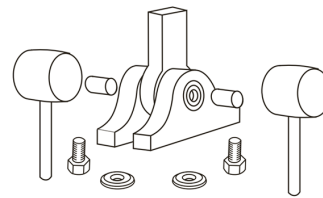
DISMOUNTING

10



To dismantle the Expander System, unscrew the fasteners on both sides and remove the washers.

11



Tap the axle alternatively on left and right side until the tension on the sleeves is released (use a piece of pipe between the axle and the mallet/hammer not to damage the threads). Remove the sleeves and axle. Do not damage the threads.